

# Winter Parking Rules in Effect

## Snow Removal Parking Restrictions

Effective November 1<sup>st</sup> – April 1<sup>st</sup>, no motor vehicles or any other obstruction shall be parked or allowed to remain on any street during and/or after a snowfall, sleet or freezing rain which there has been any accumulation of snow, ice and similar debris until the street has been cleared to its full width.

**The owner of a vehicle or obstruction violating this ordinance shall be subject to administrative penalties and/or towing.**

Exceptions include the following: There shall be **NO PARKING** whatsoever between the hours of **12:00 am to 6:00 am** during and/or after a snowfall, sleet or freezing rain which there has been any accumulation of snow, ice and similar debris until the street has been cleared to its full width on the following streets:

Main Street from 1<sup>st</sup> St. – 5<sup>th</sup> St.  
East Avenue from 1<sup>st</sup> St. – 5<sup>th</sup> St.  
West Avenue from 1<sup>st</sup> St. – 5<sup>th</sup> St.  
4<sup>th</sup> St. from East Ave. – Mill St.  
5<sup>th</sup> St. from East Ave. – Mill St.  
Mill St. from 4<sup>th</sup> St. – Jefferson Dr.  
Central Ave. from Mill St. – 6<sup>th</sup> St.

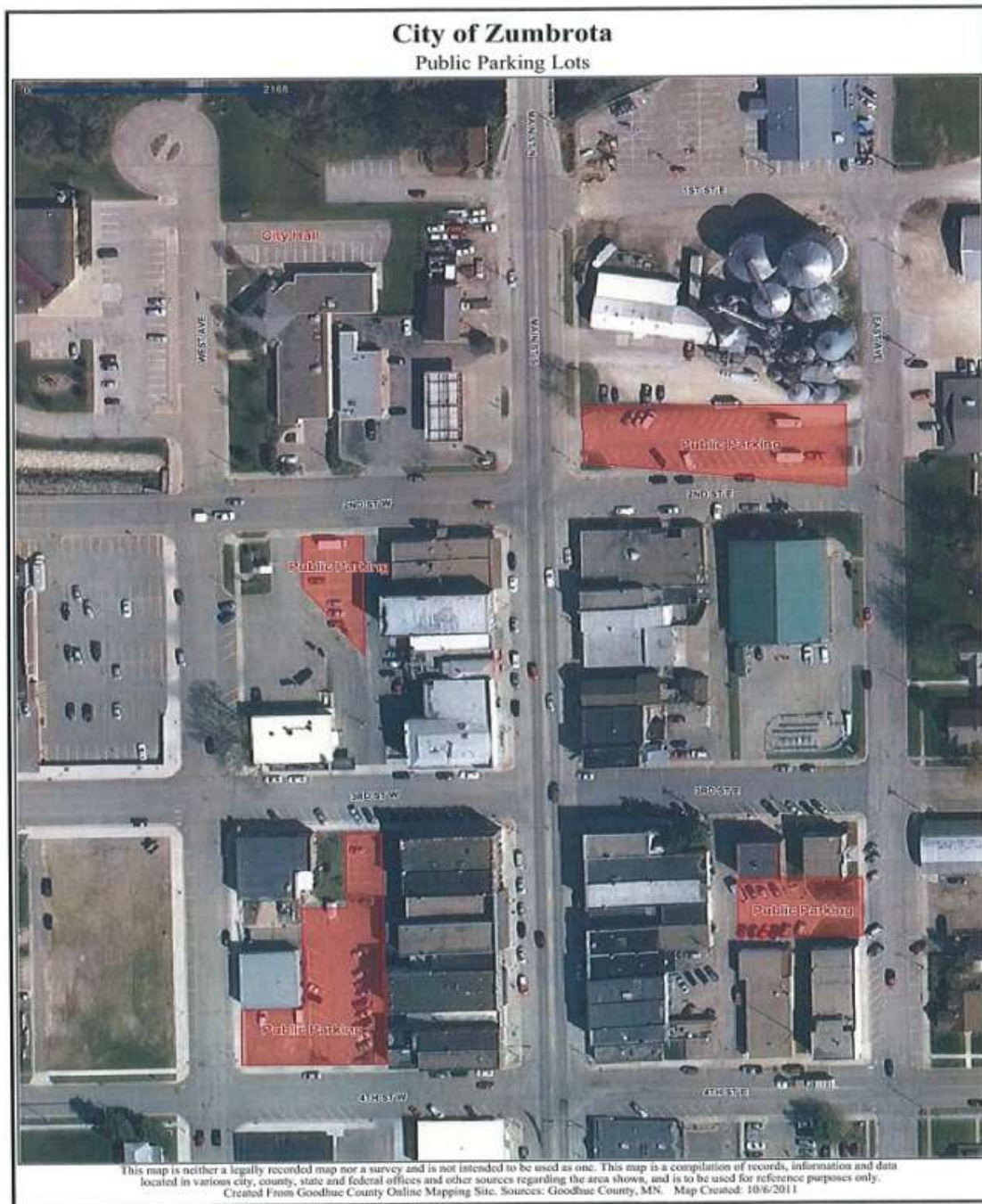


Additionally, there shall be **NO PARKING** whatsoever between the hours of **1:30 am to 6:00 am** during and/or after a snowfall, sleet or freezing rain which there has been any accumulation of snow, ice and similar debris until the street has been cleared to its full width on the following streets

1<sup>st</sup> St. from East Ave. – Main St.  
2<sup>nd</sup> St. from East Ave. – West Ave.  
3<sup>rd</sup> St. from East Ave. – Mill St.



Please feel free to use the following Downtown public parking lots:



For more information contact City Hall at 732-7318 or the Police Department at 732-5219.