



Zumbro River Trestle Bridge

Project Overview and Background

This project would enhance outdoor recreation opportunities in the region by replacing of the Zumbro River Trestle Bridge in Zumbrota, MN. The shared use bridge is a link to the Goodhue-Pioneer State Trail and provides a vital connection to the year-round trail system. This bridge is critical to the area as it is the main Zumbro river crossing for the many area walkers, bikers and snowmobilers that use it as it not only connects many miles of walking trails but also many miles of southern Minnesota snowmobile trails.

The existing structure is a railroad bridge that was retrofitted for trail usage. It is composed of two fifty-foot steel plate girder spans that are supported on limestone abutments and piers along with timber decking. The bridge was fabricated by the American Bridge Co. of New York in 1903 and is in extremely poor condition. The project would replace the bridge structure, abutments and pier or piers.

Project Justification

The existing Zumbro River Trestle Bridge is a link to the Goodhue-Pioneer State Trail and provides a vital connection to the year-round trail system. This bridge is critical to the area as it is the main Zumbro river crossing for the many area walkers, bikers, and snowmobilers.

In addition to the connection to the Goodhue-Pioneer State Trail, this bridge also connects local city walking trails to the Covered Bridge Park and many miles of southern Minnesota snowmobile trails. The existing trestle is not capable of accommodating emergency vehicle in case of a mishap on the trail system that may require an ambulance or other emergency vehicle.

The local and state trails bring tourism to our area, we have a campground at the head of the trail system in our Covered Bridge Park, lots of people come to town to camp and use the trails. In the near future Goodhue-Pioneer State Trail will connect all the way to Red Wing Minnesota and subsequently to Cannon Falls via the Cannon Vally Trail.

We also want to be prepared for the expansion by replacing the decapitated trestle bridge.

The state of Minnesota along with Goodhue Couty Engineering did an inspection of the bridge in 2023, the inspection identified several deficiencies, and it has been suggested that we replace the bridge soon.

Funding Source Summary

The project's estimated cost is \$1,400,000. The city is requesting 80% in federal funding with 20% in local cost share.

Public Engagement and Input

A feasibility report was presented at the September 19th, 2019, City Council Meeting. The project has received overwhelming support from the public. Additional meetings will be held as part of the environmental review process. See the attached letter of support from the city.

Use of Funding

The funds will be used for removal of the existing bridge, and to design and construct a new bridge structure, abutments and pier or piers to replace the existing Zumbro River Trestle Bridge. The bridge will be a shared use structure for walkers, bikers and snowmobiles and provide enough width to accommodate emergency vehicles in case there is a mishap somewhere on the trails requiring assistance. The city of Zumbrota has the remaining 20% in reserves to complete the project.

Previous Federal Funding

No previous federal funding has been provided for the project.

Impact within MN-01 and Minnesota in General

The existing Zumbro River Trestle Bridge is a link to the Goodhue-Pioneer State Trail and provides a vital connection to the year-round trail system. This bridge is critical to the area as it is the main Zumbro river crossing for the many area walkers, bikers and snowmobilers who use the trails systems daily. In addition to the connection to the Goodhue-Pioneer State Trail, this bridge also connects local city walking trails to the Covered Bridge Park and many miles of southern Minnesota snowmobile trails. The existing trestle is not capable of accommodating emergency vehicles in case of a mishap on the trail system that may require an ambulance or other emergency vehicle.

The local and state trails bring tourism to our area, we have a campground at the head of the trail system in our Covered Bridge Park, lots of people come to town to camp and use the trails. In the near future, Goodhue-Pioneer State Trail will connect all the way to Red Wing Minnesota and subsequently to Cannon Falls via the Cannon Vally Trail.

In addition to safe river crossing for the people using the trail, we want to be prepared for the future Goodhue-Pioneer State Trail expansion by replacing the decapitated trestle bridge.

This project provides regional impact in MN-01 by enhancing outdoor recreation for the area. Each day we have walkers, bikers and/or snowmobilers visit our Covered Bridge Park and trails systems, although we do have lots of out of state visitors, these people largely come areas within MN-01 and greater Minnesota.

Additional Documentation

Additional documents including letters of support for the project, area maps, and pictures of the existing trestle bridge have been provided to Dylan Rosnick and Aaron Eberhart



To Whom it May Concern:

The City of Zumbrota enthusiastically supports the replacement plan for the trestle in Zumbrota, located on the walking trail that provides a connection to many miles of waking and snowmobile trails. The existing structure is in very poor condition and needs replacement to ensure the safety of the many people who rely on this bridge for recreation all year around. In the fall of 2023, the state conducted a bridge inspection that identified many deficiencies, we were allowed to keep using the bridge with some repairs, but they told us that we need a plan and timeline for replacement. We fear that the structure will not pass another inspection, so it is imperative that we secure funding and develop a plan for replacement soon.

A steel plaque affixed to the plate girder indicates the steel portions were fabricated by the American Bridge Co. of New York in 1903. This bridge, originally part of the local railroad, crosses the Zumbro River and is embedded in a trail section connecting a walking/biking trail along Jefferson Drive in Zumbrota to the southern portion of the Goodhue-Pioneer State Trail. This Trestle bridge is a vital connection to a year-round trail which connects a walking/bike trail and serves as the main Zumbro river crossing for many miles of southern Minnesota snowmobile trails. The bridge allows access to more than five plus miles of paved trail with future hopes of expansion to the City of Goodhue and the scenic bluff country surrounding Red Wing. It is a vital part of our recreational and tourism systems.

Our trail system is a main attraction for walkers, runners, bikers, dog walkers, etc. and provides recreational benefits as well as economic impact by bringing tourists into town. The trestle is part of the trail system that connects our Historic covered bridge, city park and downtown area to many miles of trail both in the park and the Goodhue County Pioneer trail with is slated to extend all the way to Red Wing Minnesota at some time in the future. It is our firm hope that replacement of this historic structure will continue the expansion of the Goodhue Pioneer Trail to the Cannon Valley Trail and beyond. The trestle bridge has significant local and regional impact on tourism and outdoor recreation.

We appreciate your consideration of this project to be included in your community project funding (CFP) request which will be considered by the 118th Congress.

Sincerely,

A handwritten signature in blue ink, appearing to read "Todd Hammel", written over a white background.

Todd Hammel
Mayor
City of Zumbrota, Minnesota



2.27.2024

To our friends representing us in this Great State and Nation,

The Covered Bridge Riders Snowmobile Club is honored to voice our support and desire to move forward with a project to invest in infrastructure that benefits not only the community of Zumbrota but outdoor enthusiasts throughout the state. The Covered Bridge Riders Snowmobile Club is a volunteer, not-for-profit organization that maintains roughly 65 miles of snowmobile trails in central and eastern Goodhue County. Our goal is to work hard to create safe, environmentally friendly, and aesthetically pleasing trails for riders from all over the state to enjoy. To accomplish this goal, we are very proud of the amount we can accomplish simply by the gift of volunteerism and hard work, but we also understand there are times to ask for assistance from local, state, and federal officials when projects become quite large.

Currently, we are faced with one of those projects, as a major piece of infrastructure connecting numerous communities by snowmobile trail is in poor condition. The "Ol' Railroad Trestle" currently spans the Zumbro River in the Covered Bridge Park in Zumbrota. It is amazing the story this Trestle can tell, as it has seen everything from train traffic to foot traffic. It also serves as a critical component of a trail system in not only Goodhue County but Southeast Minnesota. Goodhue County itself has nearly 320 miles of groomed and maintained snowmobile trail, allowing many hardy Minnesotans to enjoy our wonderful winter season. Minnesota Primary Snowmobile Corridor 16 makes its way through Goodhue County and crosses the Tressel in Zumbrota, allowing Goodhue County trail riders access to the rest of Southeastern Minnesota. The design and interconnection of this trail system afford riders the ability to enjoy the beauty of Minnesota winters and patronize the fine and hard-working small business owners in our small communities. As snowmobilers, we have a great deal of appreciation for this critical piece of infrastructure during the cold winter months.

We also recognize and appreciate that the Trestle affords walkers and bikers the ability to cross the river and enjoy the trail system year-round. It serves as a critical component in connecting several miles of city/community trail to a beautiful retreat, known as the Pioneer Trail, allowing folks to escape down the trail and enjoy the beauties of nature. The cooperation between the snowmobiles in the winter months and foot and bike traffic when the weather is nice has been wonderful, as we all continue to work to maintain this year-round piece of heaven.

We appreciate your consideration of this project and encourage you to experience this beauty firsthand! Next time you are in Zumbrota, it is hard to miss the importance this river crossing has to our community in all four of Minnesota's very unique seasons. Thank you for all you do and God Bless America.

Sincerely,
Brandon Lunde

Club President
Covered Bridge Riders Snowmobile Club

February 28, 2024

To Whom it May Concern:

One of my early memories as a Brownie in Girl Scouts is crawling across the railroad trestle because the base was railroad ties with open spaces from which you could see the Zumbro River flowing underneath. I remember the trains going through town and using the trestle. When Zumbrota Covered Bridge was placed across the Zumbro River, and walking trails established, this same trestle became the river crossing for the back part of the park and a link to the Pioneer Bike trail.

The Pioneer Trail has long been a dream of the area. Outdoor enthusiasts hope this recreational trail will one day stretch to Goodhue and Red Wing, which will in turn link to the Cannon Valley Trail and possibly to Pine Island and then on to Rochester. Imagine the impact to our little corner of the world! The trestle crossing is vital to the trail. It is used as a crossing of the river for walks, snowmobile rides and bicycles. Kids ride their bikes over it as a safe passage to the swimming pool. The trail is always busy and where the trestle spans the river the view is exceptional.

The trail system, of which this trestle is an integral part, brings people into town and contributes to the quality of life in Zumbrota. Businesses in neighboring communities also hope for a continuous Pioneer Trail which will bring visitors to their communities and areas outside of Zumbrota. The closing of this trestle will disrupt the flow of bicycles, walkers and snowmobiles and cut off a portion of our community and other communities from access to the trail and in turn decrease the potential for tourism and outdoor recreation.

The trestle is showing its age. It is spongy, unattractive, and falling apart. Last year it had to be closed for days to allow for repairs; but the repairs are known to be a temporary fix. Soon it will be unsafe to use as a crossing. Losing that trestle would render quite a bit of the trail useless and be a tremendous loss to our city and to the entire area. Unfortunately, the cost of repairing and replacing the trestle is currently out of reach for the City of Zumbrota. Because this is an item of value to our city and the surrounding area, I would highly recommend supporting the funding of this trestle's repair and/or replacement.

Thank you for considering this project for the residents and visitors to the City of Zumbrota and to our entire area. Help us continue to enjoy the beauty of our park, the Zumbro river and the surrounding area.

Sincerely,



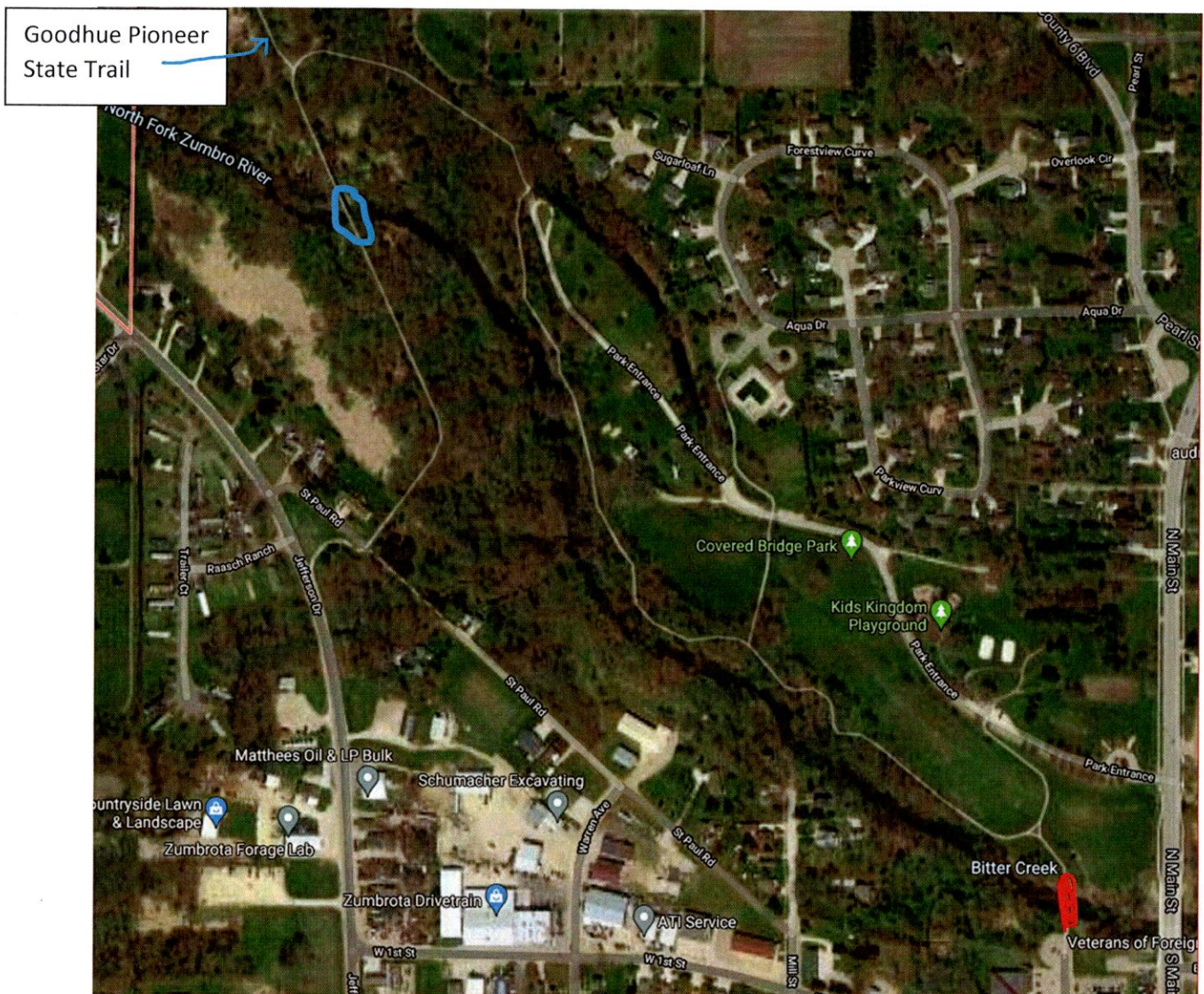
Kim Simonson
989 W 4th Street
Zumbrota, MN 55992

Shared Use Path Trestle Bridge Crossing the Zumbro River Replacement



This bridge crosses the Zumbro River and is located on a trail section that connects a trail running along Jefferson Drive in Zumbrota to the southern portion of the Goodhue-Pioneer State Trail. A steel plaque affixed to the plate girder indicates the steel portions were fabricated by the American Bridge Co. of New York in 1903. This Trestle bridge is a vital connection for a paved trail used for walking, running and biking in the summer months and in the winter the trestle is the main river crossing connecting hundreds of miles of snowmobile trails and cross-country skiing trails. The existing structure is in very poor condition and needs replacement to ensure the safety of the many people who rely on this bridge for recreation all year around. The existing bridge is a railroad bridge that was retrofit for trail usage. It is composed of two 50' steel plate girder spans, and seven 13'-6" timber beam spans for an approximate bridge length of 200'. The two steel plate girder spans are supported on limestone abutments and piers. The timber beam spans are supported on timber pile bent piers and a timber pile bent abutment. The existing timber deck is comprised of 8x8 timber ties running across the beams, 2x6 sleepers running longitudinally, 2x6 decking, and 8x8 curbs. The lumber is rotting and the limestone abutments are crumbling.

Trestle Bridge in Zumbrota Minnesota



The Trestle location is highlighted in blue on the picture above. For reference the Historic Covered Bridge is highlighted in Red. You can also see the trail system within and around the Covered Bridge Park. This trail system connects to the Goodhue County Pioneer Trail which extends another 5 plus miles and connects the City of Zumbrota Trail system as well (See the Zumbrota Sidewalk and Trail System attachment).

The trestle is an important river crossing that allows the trail to extend in two different directions. It is also the snowmobile crossing that connects hundreds of miles of snowmobile trail to the City of Zumbrota and the Regional Goodhue Pioneer Trail.

I have also attached more pictures of the bridge on the next page. It has deteriorated over the years and needs to be replaced in the near future.



Existing Steel Plate Girder Spans (Looking NW)

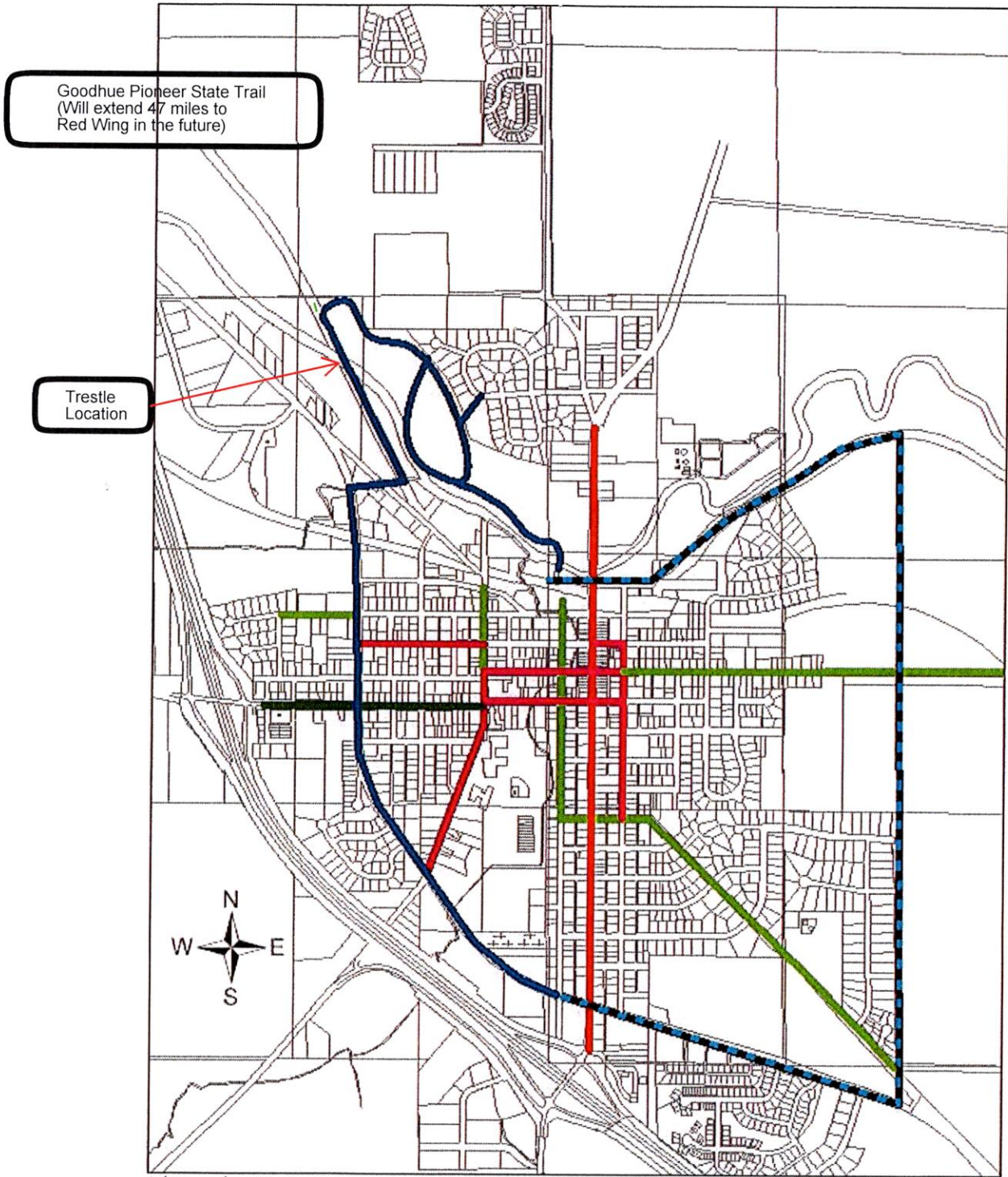


Existing Timber Beam Spans (Looking NW)



Existing Timber Deck (looking South)

Zumbrota Sidewalk and Trail System



Legend

- Existing Trunk Sidewalk
- Future Trunk Sidewalk
- Existing City Trail
- Future City Trail

GOODHUE PIONEER STATE TRAIL

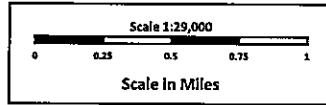
TRAILS

- State Trail (paved)
- State Trail (natural surface horse trail)
- Miles from Northern End of Trail Segment
- Cannon Valley Trail (paved and \$)
- Other Paved Trails
- Hay Creek Unit Trails - Richard J. Dorer Memorial Hardwood State Forest (unpaved) (open to horses, hiking, snowmobiling)

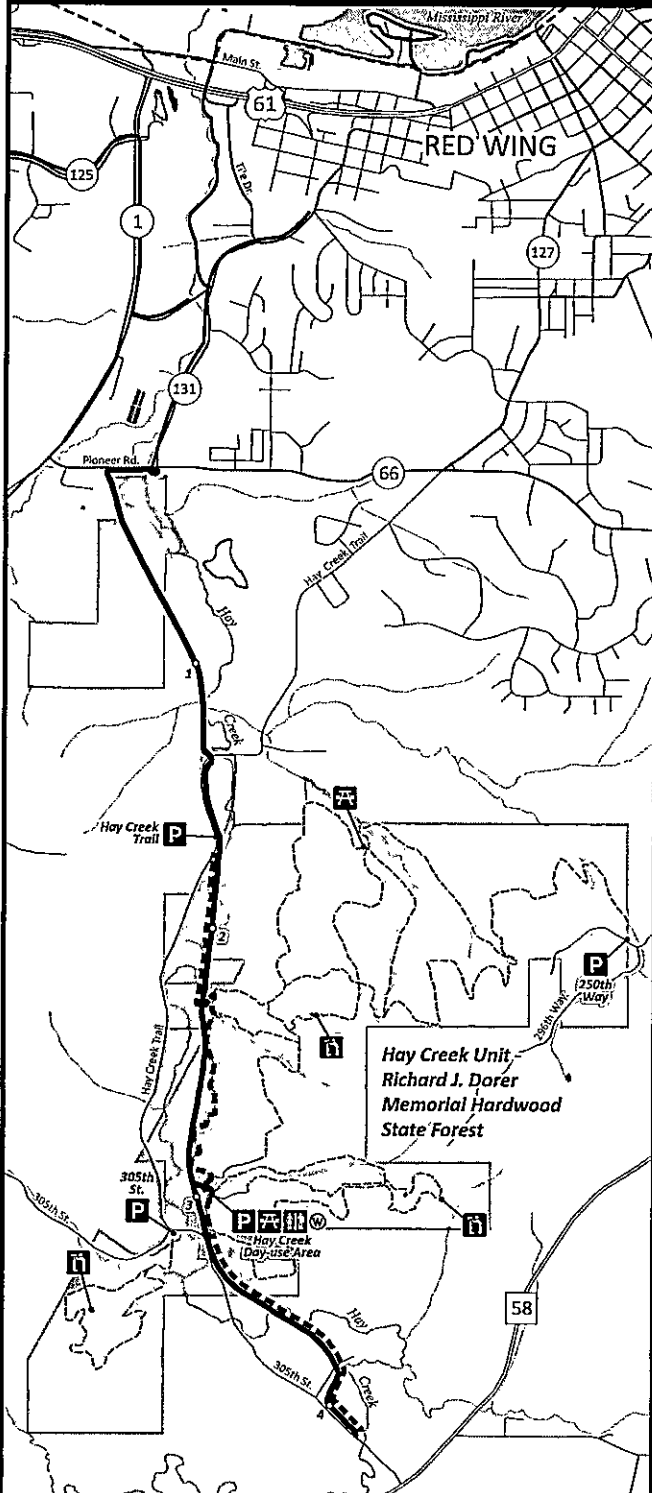
FACILITIES

- Parking
- Shelter
- Overlook
- Picnic Area
- Toilet
- Drinking Water

North and South Segments



NORTH SEGMENT



SOUTH SEGMENT

